



HEMMINGS HOMES

OFFERS OVER

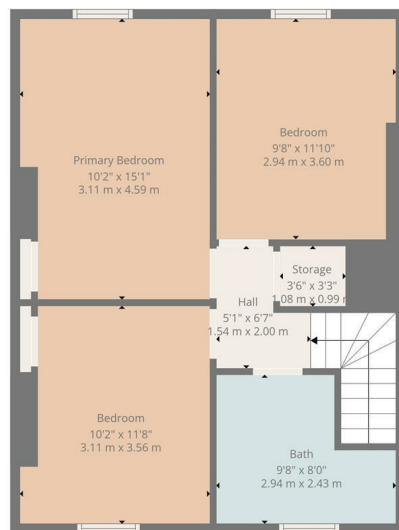
£125,000

Shields Road

Motherwell, ML1 2LD



Ground Floor



1st Floor



TOTAL: 1072 sq. ft, 100 m2
 Ground floor: 546 sq. ft, 51 m2, 1st floor: 526 sq. ft, 49 m2
 EXCLUDED AREAS: STORAGE: 20 sq. ft, 2 m2, WALLS: 96 sq. ft, 8 m2
Floor Plan Created By Cubicasa App. Measurements Deemed Highly Reliable But Not Guaranteed.



Energy Efficiency Rating		
	Current	Potential
Very energy efficient - lower running costs		
(92 plus) A		
(81-91) B		
(69-80) C		
(55-68) D		
(39-54) E		
(21-38) F		
(1-20) G		
Not energy efficient - higher running costs		
Scotland	71	82
	EU Directive 2002/91/EC	

Agents Note: Whilst every care has been taken to prepare these particulars, they are for guidance purposes only. All measurements are approximate and are for general guidance purposes only and whilst every care has been taken to ensure their accuracy, they should not be relied upon and potential buyers/tenants are advised to recheck the measurements



OFFICE ADDRESS
 376 Brandon Street
 Motherwell
 North Lanarkshire
 ML1 1XA

OFFICE DETAILS
 01698 263413
enquiries@hemmingshomes.co.uk
hemmingshomes.co.uk